



Corporaal Enterprises

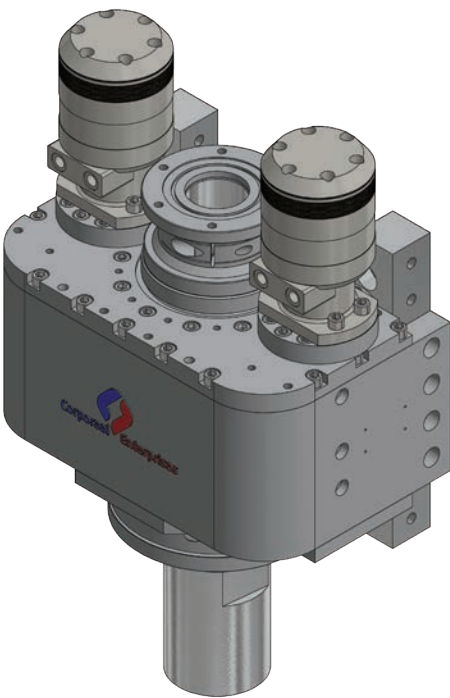
Engineered onshore drilling developments

ROTARY HEADS

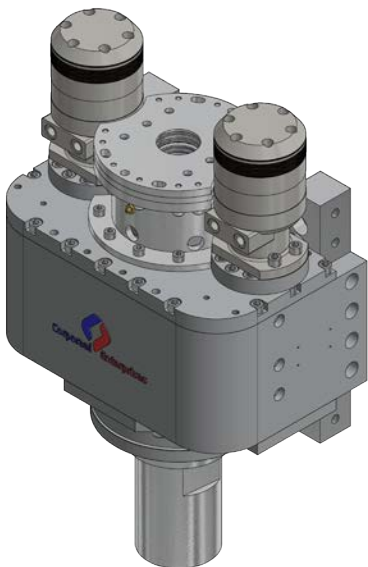
Corporaal Enterprises offers a range of rotary heads for Rigs of any size. CE can deliver heads to suit exploration, water well, Geo-technical, multi-purpose and gas drilling applications.

With such a huge range, CE will provide you a rotary head to maximize production and minimize cost. Each model has a quick to service load nut, for easy adjustment of bearing pre-load making servicing hassle free. The CE range is compatible with all common brand swivels and blow downs.

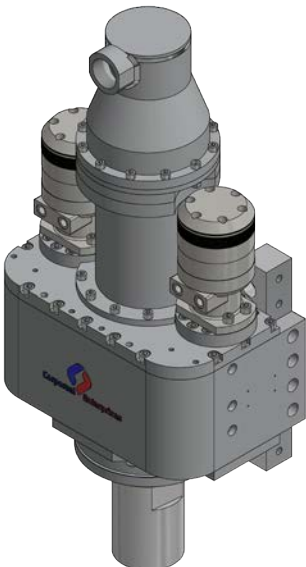
All rotary heads in the CE range are manufactured in Australia, assuring a quality product and quality service. See below specs on the more popular models.






RC CE8 BASIC - P2734-62



RC CE8 BD PEDESTAL - M3917-62

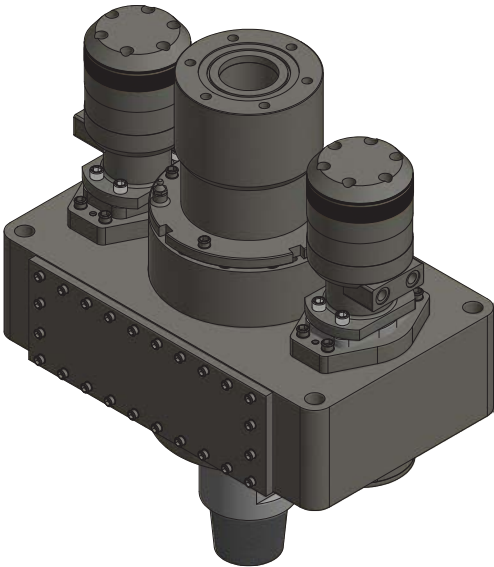


BH CE8 AIR PEDESTAL - M4753-62

MODEL	MOTORS	MOTOR MOUNT	PEAK RPMS	TORQUE OUTPUT	HYDRAULIC REQUIRMENTS	SHAFT FLOAT	ORDER CODE
RC CE8 BASIC	*PARKER TG335	Magneto 	85	5946 FT.LBS 8061 Nm	*3500 PSI/50 GPM	N/A	P2734-62
RC CE8 BD PEDISTAL	*PARKER TG335	Magneto 	85	5946 FT.LBS 8061 Nm	*3500 PSI/50 GPM	N/A	M3917-62
BH CE8 AIR PEDISTAL	*PARKER TG335	Magneto 	85	5946 FT.LBS 8061 Nm	*3500 PSI/50 GPM	76.2mm	M4753-62

Note: threads available - 3 1/2" IF BOX – Ø71mm, 3 1/2" IF PIN – Ø68mm, 2 3/8" REG BOX – Ø41mm.
OTHER MOTOR OPTIONS AVAILABLE ON REQUEST


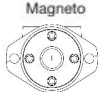
ROTARY HEADS



TG280 PARKER

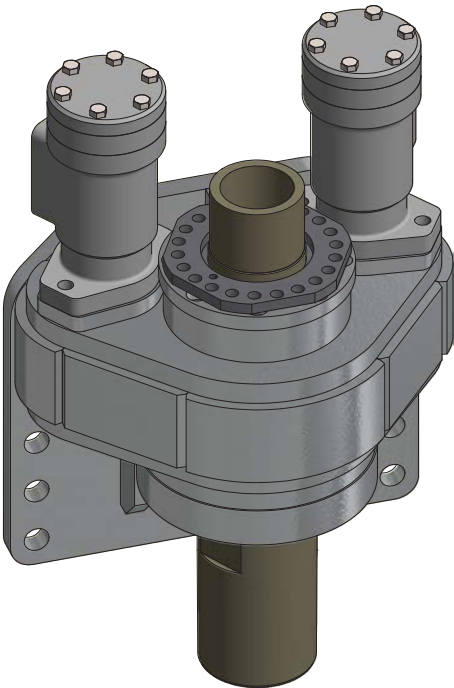
		PRESSURE IN PSI							
		500	1000	1500	2000	2500	3000	3500	4000
FLOW IN GPM	1	560	1154	1761	2391				lb - ft rpm
	2	2	1	1	0				
	3	576	1178	1790	2413	3039	3673	4312	4955
	4	4	3	3	2	2	1	1	1
	6	596	1226	1862	2512	3148	3786	4423	5054
	8	8	7	7	6	5	4	4	3
	10	596	1243	1872	2512	3148	3786	4423	5054
	12	12	11	11	10	9	8	7	6
	14	597	1243	1891	2537	3182	3823	4460	5086
	16	16	15	15	14	13	12	10	9
FLOW IN GPM	18	591	1245	1898	2552	3203	3846	4482	5110
	20	20	19	19	18	16	15	14	13
	22	578	1239	1901	2561	3218	3870	4513	5144
	24	29	28	27	25	24	23	21	20
	26	554	1224	1889	2550	3207	3858	4504	5145
	28	37	36	35	33	32	30	28	27
	30	520	1188	1858	2521	3176	3827	4475	5116
	32	50	48	47	45	43	42	39	37
	34	476	1147	1822	2492	3154	3809	4460	5101
	36	63	61	58	57	55	53	50	48
FLOW IN GPM	38	509	1047	1725	2400	3071	3733	4386	5034
	40	84	81	79	76	74	71	69	66
	42	373	915	1583	2258	2936	3612	4278	4935
	44	105	102	99	96	93	90	87	84
	46								
	48								
	50								
	52								
	54								
	56								

UNIVERSAL - M2721-62

MODEL	MOTORS	MOTOR MOUNT	PEAK RPMS	TORQUE OUTPUT	HYDRAULIC REQUIRMENTS	SHAFT FLOAT	ORDER CODE
UNIVERSAL ROTARY HEAD	*PARKER TG280		105	5099 FT.LBS 6913 Nm	*3000 PSI/50 GPM	76.2MM OR NONE OPTION	M2721-62
COMPACT HEAD	*EATON M22 2000 TWO SERIES MOTOR		121	2606 FT.LBS 3533 Nm	*3500 PSI/30 GPM	N/A	M2788-62

2000 SERIES EATON MOTORS

		PRESSURE IN PSI																	
		250	500	750	1000	1250	1500	1750	2000	2250	2500	2750	3000	3250	3500				
FLOW IN GPM	0.5	167	350													lb-ft rpm			
	1	2	1																
	2	203	393	583	777	957	1147	1310	1470	1633									
	3	6	6	6	5	5	5	4	3	2									
	4	207	403	600	800	990	1170	1350	1533	1713	1893	2073	2250	2430	2607				
	5	12	12	12	11	11	10	10	9	9	8	7	6	4	3				
	6	227	417	627	833	1040	1230	1420	1613	1803	1993	2183	2373	2563					
	7	25	25	24	24	24	23	22	21	20	19	18	17	17					
	8	207	423	640	853	1077	1270	1463	1657	1853	2043	2237	2430						
	9	37	37	36	36	36	35	33	32	31	29	28	26						
FLOW IN GPM	10	200	423	647	867	1097	1293	1490	1690	1887	2083	2280							
	11	49	49	49	48	48	47	45	43	42	40	39							
	12	190	417	647	870	1103	1307	1510	1717	1920	2123								
	13	62	61	61	60	60	59	57	55	53	51								
	14	177	407	640	867	1100	1307	1510	1717	1920	2123								
	15	74	74	73	72	72	71	69	67	64	62								
	16	160	393	623	853	1070	1290	1503	1707	1910									
	17	86	86	85	84	84	83	80	78	76									
	18	143	373	607	833	1070	1290	1493	1693	1897									
	19	98	98	97	96	96	94	92	89	87									
FLOW IN GPM	20	123	353	587	813	1047	1267	1473	1683										
	21	111	111	109	109	108	106	104	101										
	22	107	327	560	787	1017	1237	1457	1673										
	23	123	123	122	121	120	118	116	113										
	24	80	307	540	767	997	1187	1397	1607										
	25	136	135	134	133	132	130	129	128										
	26	60	290	517	747	973	1140	1340	1543										
	27	148	147	147	145	144	143	142	140										
	28	50	280	507	733	963	1113	1310	1507										
	29	154	153	152	150	148	146	144	142										
FLOW IN GPM	30	227	453	680	907	1047	1270												
	31	183	181	180	179	178	176												
	32																		
	33																		
	34																		
	35																		
	36																		
	37																		
	38																		
	39																		



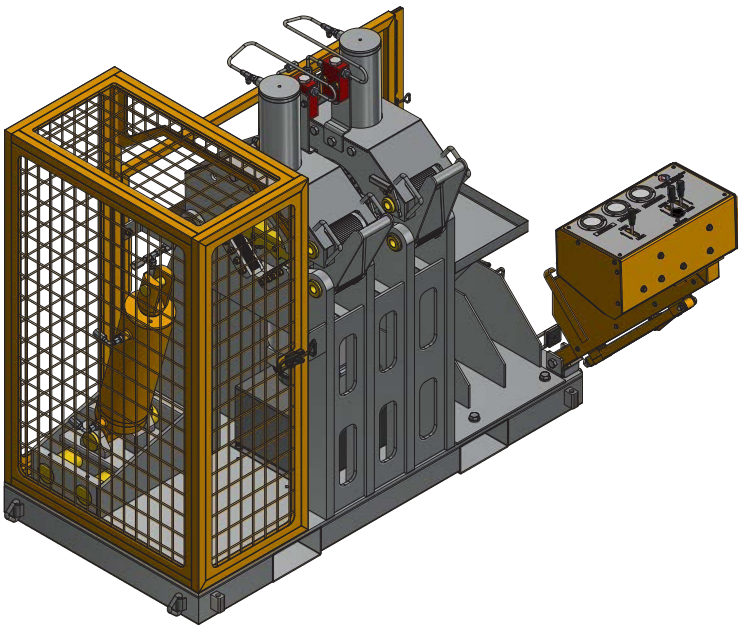
COMPACT - M2788-62

CE BREAKOUT BENCHES

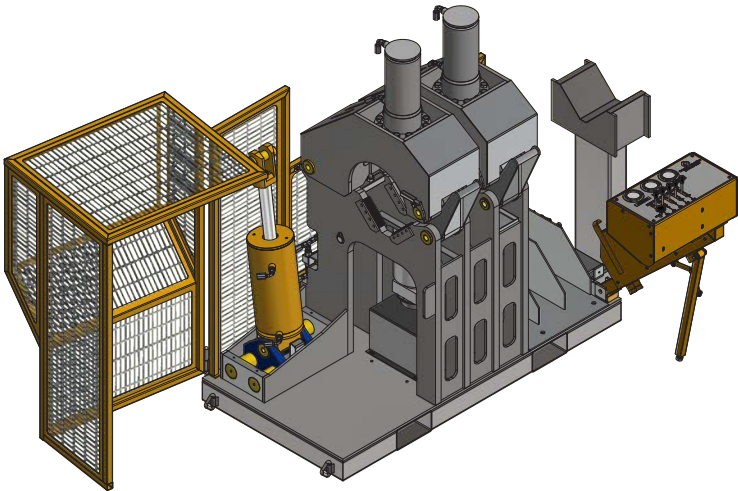
The CE breakout bench range was developed to meet the demand for a safer hammer maintenance tool than what is commonly available on the market. These top quality benches tick all the right boxes to make hammer maintenance a simple exercise.

Compact
Self contained
Reliable
Safe

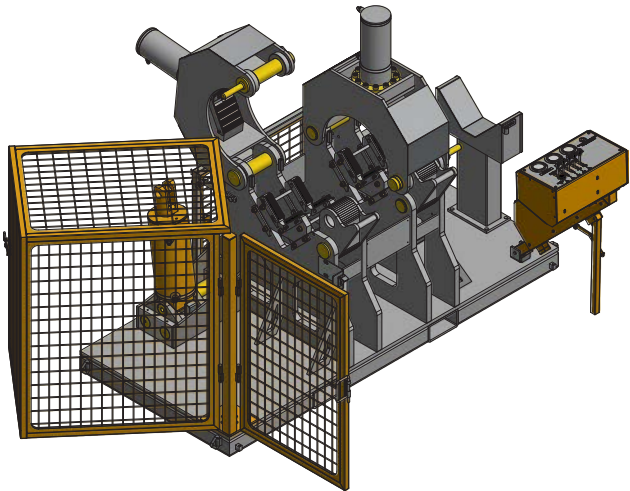
Multiple attachment options enables customization to suite your environment or preferences. These units include hydraulic power pack, tool storage area and safety cage all within the base dimensions preventing floor clutter such as loose spanners or hosing.



4-8 BREAKOUT BENCH - M2914-62



6-12 BREAKOUT BENCH - M2914-62



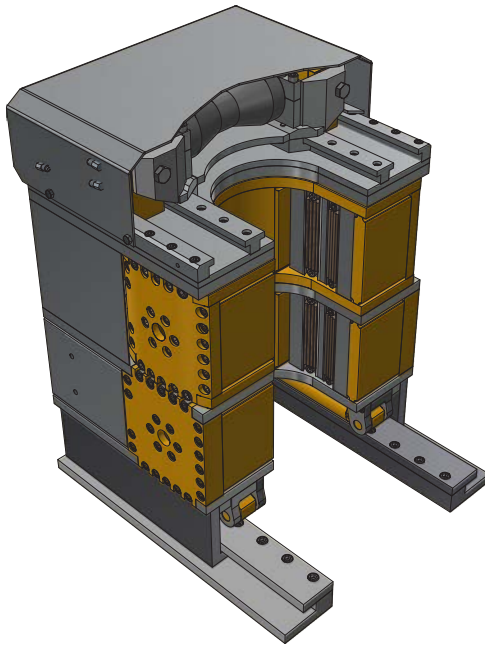
12-18 BREAKOUT BENCH - M2914-62

MODEL	POWER OPTIONS	CLAMP RANGE	CLAMP FORCE	*TORQUE	DIMENSIONS	ORDER CODE
4-8 BREAKOUT BENCH	SINGLE PHASE, THREE PHASE, AIR OVER HYDRAULIC OR DIESEL	*4" TO 8" HAMMERS	70,547 LB.F 32 TONNE	55,000 LB.FT 74,570 Nm	157cm x 80cm x 147cm	M4214-62
6-12 BREAKOUT BENCH	SINGLE PHASE, THREE PHASE, AIR OVER HYDRAULIC OR DIESEL	*6 TO 12" HAMMERS	88,184 LB.F 40 TONNE	100,000 LB.FT 13,5582 Nm	195cm x 100cm x 165 cm	M2916-62
12-18 BREAKOUT BENCH	THREE PHASE, OR DIESEL	12" TO 18" HAMMERS	13,2277 LB.F 60 TONNE	120,000 LB.FT 16,2698 Nm	220cm x 100cm x 165cm	M4104-62

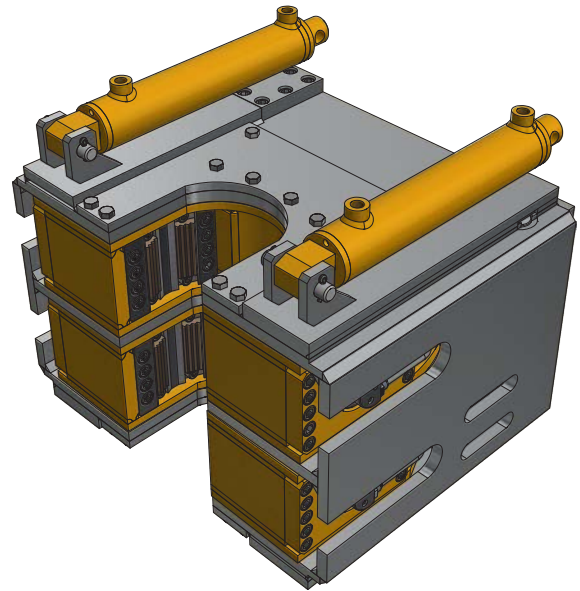
Note: Jaw extensions available to achieve smaller clamping diameters

BREAKOUTS

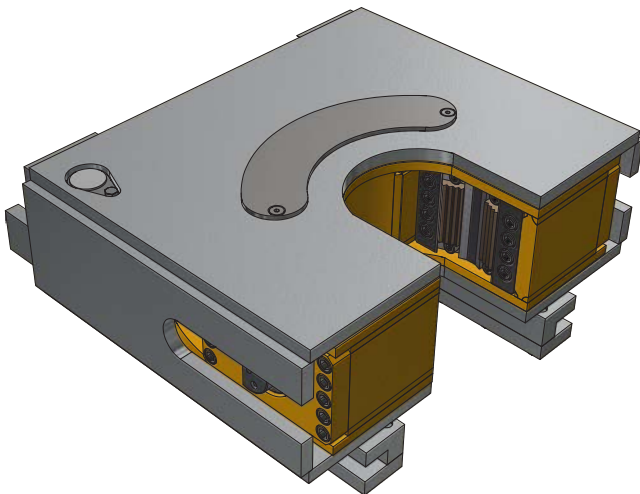
The Gorilla Grip breakout system is developed as an after market breakout to retro fit to Atlas DML, DM45 & DM50's with minimal modifications and due to its compact design and optional incorporated deck spanner and/or rod kicker this breakout is capable of being mounted into more then just atlas blast hole rigs.



GORILLA GRIP - M3200-62



DUAL ROTARY - M3141-62

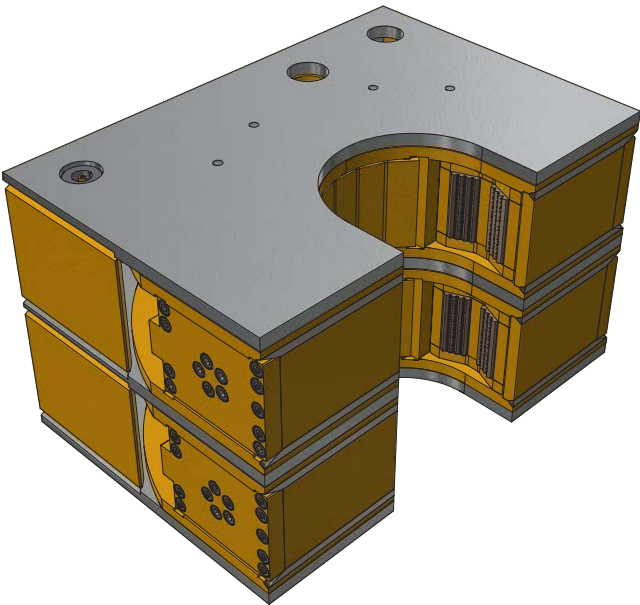


SINGLE ROTARY - M3918-62

The Dual Rotary Breakout System is an after market breakout designed to retro fit into T685 & T450 drill rigs with none to minimal modifications required. Fabricated from high tensile steel, these breakouts are light weight, compact and built to last. The dual rotation top and bottom clamps allows for 52° of rotation, a major advantage in breaking out drill string and hammers in one operation. this breakout is also available as a single unit.

MODEL	ROTATION	CLAMP RANGE	CLAMP FORCE	*TORQUE	DIMENSIONS	ORDER CODE
GORILLA GRIP	27°	4 ½" TO 8"	61,729 LB.F 28 TONNE	30,000 LB.FT 40,674 Nm	48.5cm x 49cm x 73cm	M3200-62
DUAL ROTARY	52°	4" TO 6"	38,581 LB.F 17.5 TONNE	27,583 LB.FT 37,398 Nm	55cm x 43cm x 37cm	M3141-62
SINGLE ROTARY	26°	4" TO 6"	38,581 LB.F 17.5 TONNE	27,583 LB.FT 37,398 Nm	55cm x 43cm x 17.5cm	M3918-62

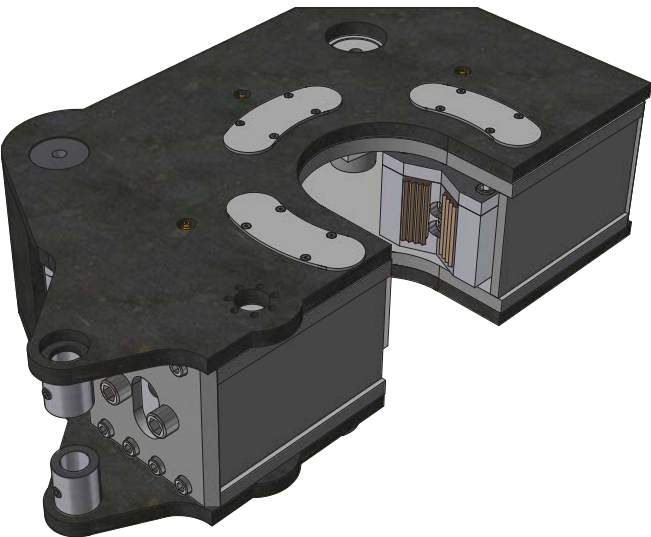
BREAKOUTS



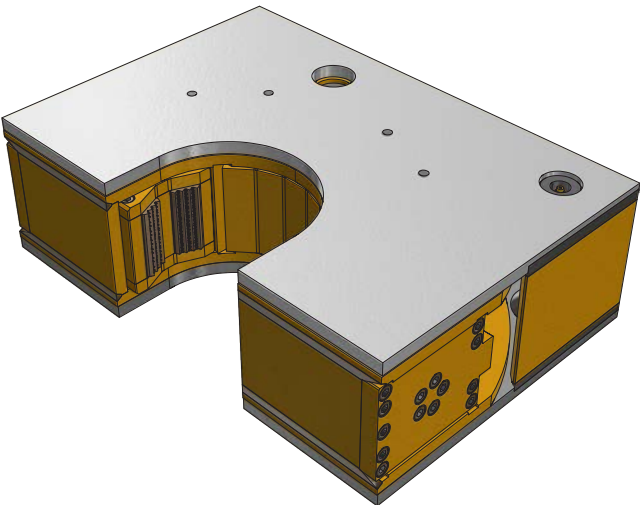
EAGLE GRIP DUAL - M3609-62

The Eagle Grip single & dual are light weight & compact breakout systems which can either be mounted inside the mast or as a swing in system. The breakout comes as a dual rotation unit with top and bottom rotating clamps giving 50° of rotation or as a single unit with single clamp and rotate.

This unit designed as a retro fit for UDR1200 model drill rigs as a mast in mount breakout, tramming into position from behind the drill line within the mast, keeping line of sight to the drill table free from obstructions.



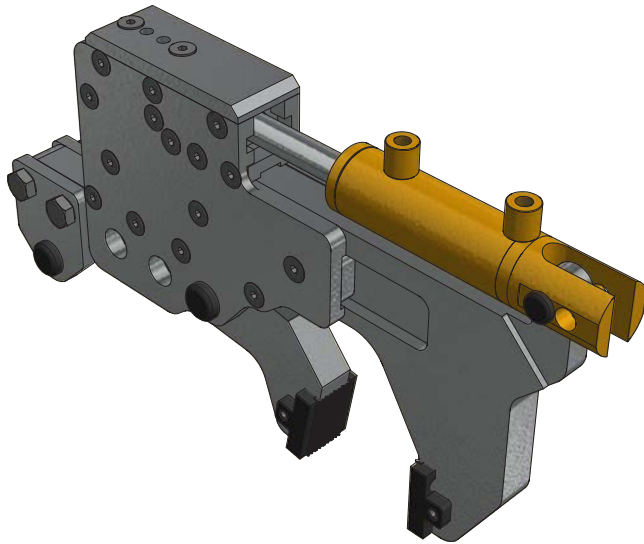
BULL ANT SINGLE - M2927-62



EAGLE GRIP SINGLE - M3608-62

MODEL	ROTATION	CLAMP RANGE	CLAMP FORCE	*TORQUE	DIMENSIONS	ORDER CODE
EAGLE GRIP DUAL	50°	1.5" TO 6"	*11,300 LB.F 7.6 TONNE	*11,400 LB.FT 15,500 Nm	45cm x 30cm x 27cm	M3609-62
EAGLE GRIP SINGLE	25°	1.5" TO 6"	*11,300 LB.F 7.6 TONNE	*11,400 LB.FT 15,500 Nm	45cm x 30cm x 14cm	M3608-62
BULL ANT SINGLE	26°	2" TO 6"	33,674 LB.F 15.2 TONNE	9,126 LB.FT 12,373 Nm	70cm x 35cm x 19cm	M2927-62

HYDRAULIC WRENCH



This hydraulic wrench is designed for drill rigs with restricted space that won't allow for other bulky breakout systems. Half the size & weight but with all the torque and clamping pressure of a conventional breakout, the Razorback wrench is ideal for any size rig but can also be utilized with breakout benches as an alternative to spanner tooling.

Manually swing in & self centralizing, this breakout wrench ideal for water well drill rigs, doing away with dangerous modified hand tools such as pipe wrenches fitted with hydraulic cylinders.

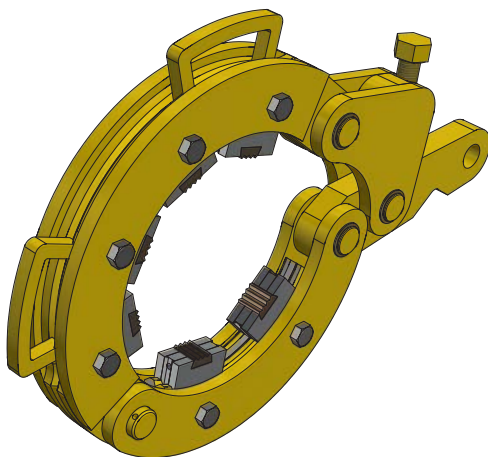
2-8 RAZORBACK WRENCH - M3599-62

MODEL	CLAMP ADJUSTMENT INCREMENTS	CLAMP RANGE	CLAMP FORCE	TORQUE	DIMENSIONS	ORDER CODE
2-8 RAZORBACK	52mm	2" TO 8"	20,900 LB.F 9.5 TONNE	11,800 LB.FT 16,000 Nm	46cm x 28cm x 6cm @ 33kg	M3599-62

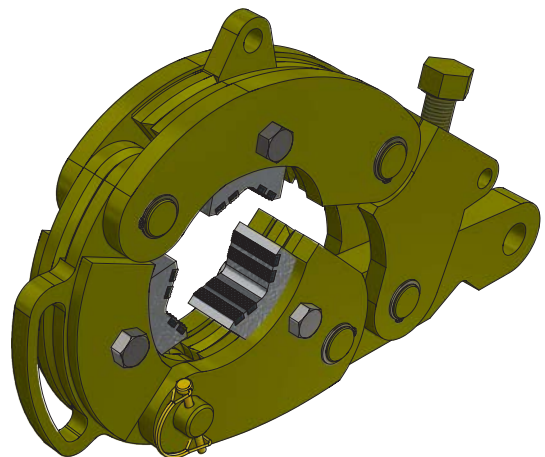
WRAP SPANNER

The Torque-Max spanner is an alternative to chain tong spanners with the added bonus of being more reliable, harder wearing & safer to operate. Suited for heavy duty applications due to the robust design & high tensile materials used for manufacturing the spanner.

The torque-max spanner is designed to stop any slippage. The over lever applies clamping force when the breaking motion begins, the more torque applied the higher the clamping pressure is.



10-12 TORQUE-MAX - M3622-64

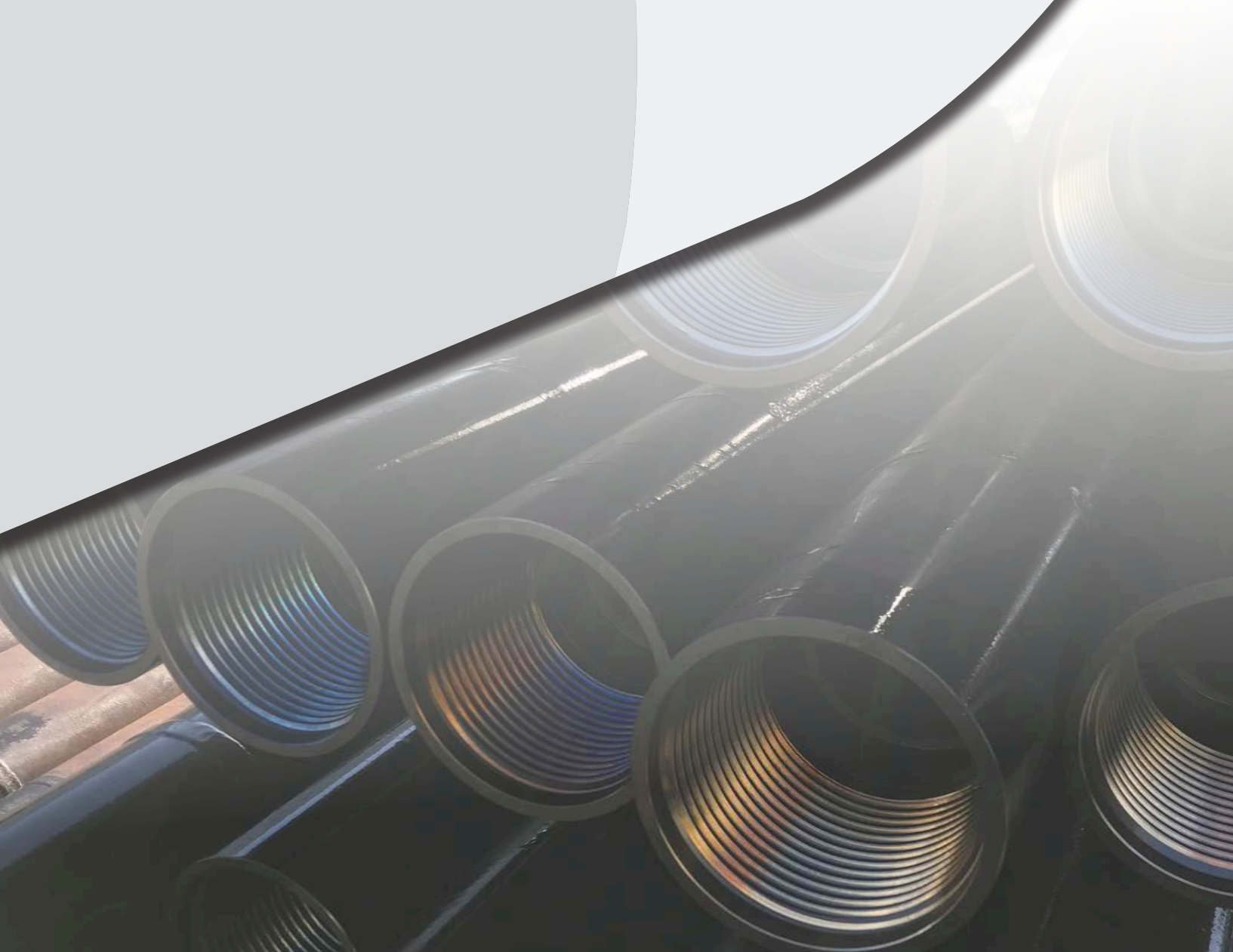


4-6 TORQUE-MAX - M3197-62



ROCKWELL DRILLING TOOLS

Designing and producing
superior drilling products



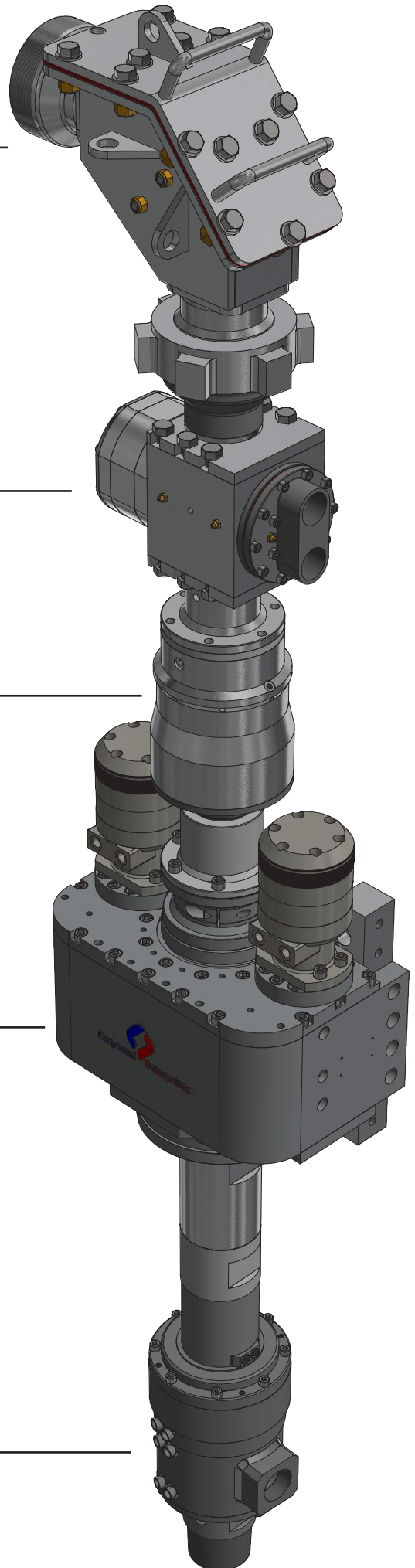
DEFLECTOR WITH DUROBLOCK TUNGSTENWEAR TILE:
M4325-62

CE50 AUTO BLOW BACK BLOW DOWN UNIT:
M4057-62

CE60 SRS-2 SAMPLE SWIVEL:
M4745-62

CORPORAAL ENTERPRISES - CE8 ROTARY HEAD:
P2734-62

4.5 ENDURO AIR SWIVEL - SEAL CARTRIDGE TYPE:
M4048-62



DRILL RODS

Our drill rods are all manufactured from high tensile steels to produce a superior product and a longer lasting life cycle. The hardened tool joint ends help prevent premature deterioration and galling when torquing up the drill string joints. We manufacture in a wide selection of thread choices show in th below chart



Polyurethane-ULTRA ROD SEAL

Go further with our Polyurethane-ULTRA seals; these seals are produced for the best life expectancy from any drill rod seal available on the market today.

The Polyurethane-ULTRA seals are longer lasting then more commonly used ROT-95 polyurethane, boasting more abrasion resistance, greater temperature range (-50° to +120°) higher tensile strength (so they can take a beating) and a superior compression rate for better sealing.

REVERSE CIRCULATION AND AIR-CORE

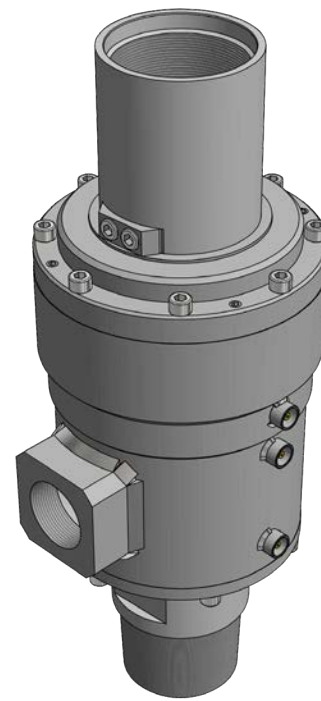
OUTSIDE DIAMETER Ø	THREAD	TYPICAL SHOULDER TO SHOULDER LENGTH	SPANNER FLATS	WEIGHT (with innertube)	INNER TUBE BORE	PART No.
Ø2" (50.8mm)	48 ARD	2m	45mm	17kg	19mm	-
Ø2 13/32" (61mm)	CE60	2m	51mm	24kg	30mm	M4221-62
Ø3" (76mm)	73 ARD	3m	60mm	43kg	37mm	M3992-62
Ø3" (76mm)	3" RCR	3m	60mm	43kg	37mm	-
Ø3 ½" (90mm)	90 ARD/A	3m	78mm	55kg	45mm	-
Ø4" (101mm)	4" RCM	6m	89mm	170kg	45mm	-
Ø4" (101mm)	102 ARD	6m	89mm	170kg	49mm	-
Ø4" (101mm)	4" RRE	6m	89mm	170kg	49mm	M4222-62
Ø4 (101mm)	4" RCR	6m	86mm	168kg	45mm	-
Ø4 ½" (114mm)	115 ARDX	6m	102mm	187kg	49mm	M4426-62
Ø4 ½" (114mm)	4 ½" RRE	6m	100mm	186kg	49mm	M4216-62
Ø4 ½"(114mm)	4 ½" RCR	6m	102mm	188kg	49mm	M4047-62
Ø4 ½" (114mm)	4 ½" RCM	6m	95mm	185kg	49mm	-
Ø5" (127mm)	5" RRE	6m	106mm	230kg	60mm	-
Ø5" (127mm)	5" RCM	6m	106mm	185kg	60mm	-

For all other drilling techniques, we can provide drill rod length & thread configuration on request such as but not limited to:
CUBEX, API - REG, API - IF, API - FH, NC, MAYHEW, BECO

SWIVELS

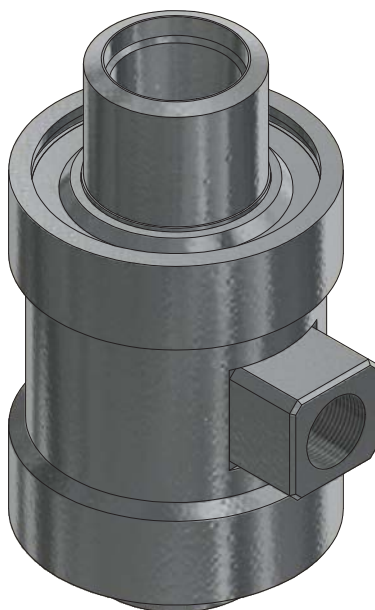
The 120CE ENDURO air swivel is designed to be durable and reliable. Rather than the more commonly used o'ring seals used by other manufacturers, the 120CE ENDURO air swivel uses high temp, high pressure rotary seals, allowing for a longer service life and more dependability.

In most cases when it is time to replace an air swivels seals, it's necessary to remove the swivel from the drill head which is a lengthy and laborious process, bring an extended halt to drilling. This is NOT the case for the 120CE ENDURO air swivel, the swivel can remain attached to the drill head with the bull hose fitted. Simply use jacking bolts to pop the seal cartridge out from the bottom of the swivel, exchange the old seals for new ones and reinstall the seal cartridge. Less frequent and easier serviceability allows for less down time and more drilling.

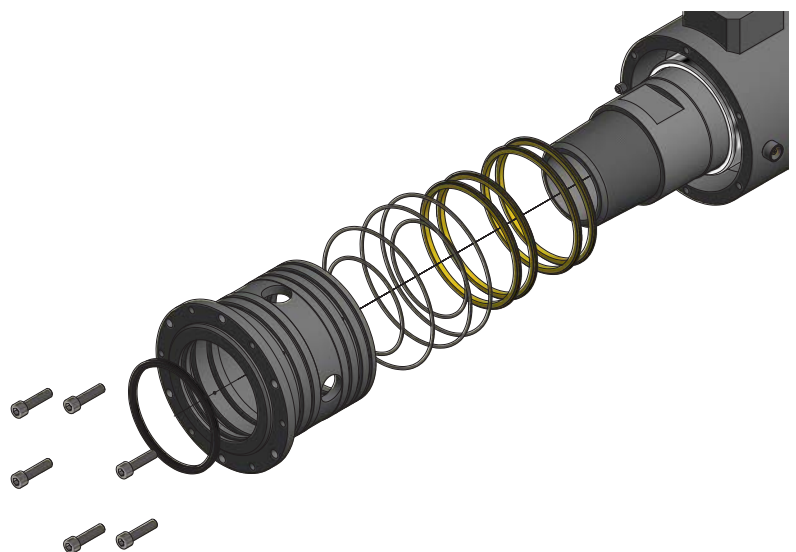


**4 1/2" ENDURO AIR SWIVEL
M4048-62**

- SPECIALLY DEVELOPED ROTARY SEALS RATED UPTO 4300 PSI AT -50° TO +200°
- HARD CHROMED SEAL SLEEVE
- EASIER SERVICEABILITY, THIS SWIVEL CAN BE SERVICED WHILE STILL ATTACHED TO THE RIG



**3 1/2" ENDURO AIR SWIVEL
M3955-62**



Like its larger counter part, the 3 1/2" ENDURO air swivel is equipped with high temp, high pressure rotary seals & hard chromed seal sleeves. This swivel is ideal for Aircore set ups.

SWIVELS

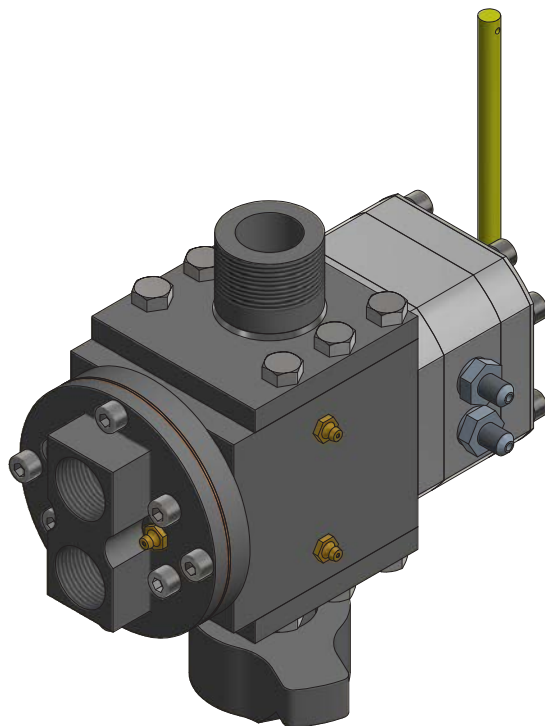


CE60-SRS 2 SAMPLE SWIVEL
M4745-62

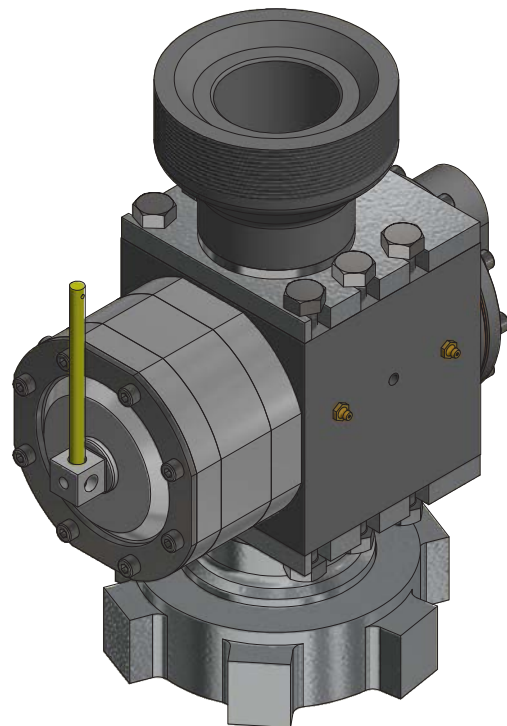
Our CE60-SRS 2 sample swivel is equipped with opposing dual spherical roller bearings which are widely spaced to evenly distribute torque through the housing and shaft, maximizing bearing life and making it robust enough to cope with the challenging conditions of testing environments.

The CE60-SRS 2 sample swivel run v pack seals at the top end, which are easily replace by simply removing the blowdown adapter plate. The seals are run on a hard chrome and ground sleeve, making this sleeve as the replaceable sealing surface rather than on the shaft is far more cost effective.

BLOW DOWNS



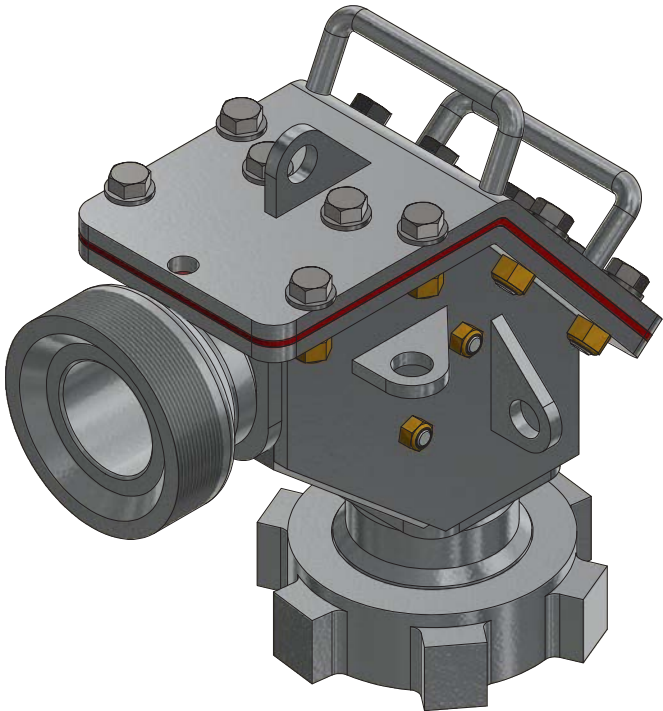
CE30 BLOW DOWN
P4822-62



CE50 BLOW DOWN
M4057-62

We offer two different size blowdown units, the CE50 SRS BBD durable workhorse & the smaller more compact CE30 SRS BBD for more fine-tuned RC or air core applications.

DEFLECTORS



CE80 MARATHON DEFLECTOR
M4283-62

We provide a whole range of deflector boxes from the more common 27° and 90° deflector boxes to specialized “dog leg” configurations.

What sets our deflectors apart from the rest is the longevity we can achieve thanks to the high tensile build of the deflector body & the low wearing long lasting duroBlock. The duroBlock can achieve 5x the life of standard bisalloy or ceramic wear blocks, if not more.

We also manufacture hard pipe extension tubes for hard plumbing, hose tails, knock on nuts & weld on mushrooms.

DEFLECTOR	DEFLECTON ANGLE	THREAD OPTIONS	TILE OPTIONS
2"	30°, 45°	NPT, BSP, DIXON, DSC, DSF	ceramic, bisalloy
3"	27°, 40°	ACME, BSP, DSC, DSF	ceramic, bisalloy, duroblock
4"	27°, 40°, “dogleg”	ACME, FLANGE	ceramic, bisalloy, duroblock
5"	27°, 40°, “dogleg”	ACME, FLANGE	bisalloy, duroblock

We can provide all you need from

Swivels, Blow downs, Rods, Subs, Digout subs, Shock subs, Air core bits, Hole openers, Stabilizers, Deflector boxes, Sample hose & fittings, Stuffing boxes, Fishing tools, Lifting bails & sample bags

If you require top quality drilling consumables to get the edge of the competition call one of our sales team members today for a quote

Phone - 1300 790 925
Phone international - +61 89409 7744
Email - sales@corporaal.com.au



Drill Sampling Technologies

The Wise Choice for Drill Sampling Equipment



DST ensure all products from design to manufacturing hit all the necessary bullet points of a quality product

- THE BEST IN QUALITY
- SAFE TO USE
- SIMPLE TO OPERATE & MAINTAIN
- PRODUCES REPRESENTATIVE SAMPLES OF EQUAL WEIGHT
- INNOVATIVE
- DESIGNED IN CONJUNCTION WITH MINING COMPANIES, DRILLING CONTRACTORS AND RIG MANUFACTURERS

DSS-01 Sampling System Specifications

Type: Adjustable split static cone splitter

Airflow Rating: 450 - 1400 Litres per Second
(1000 - 2500 CFM)

Sampling Conditions: Dry

No. of Sample Ports: 2 or 3

Sample Collection Type: Sample Bag or Hose Discharge

Adjustment: Bolt on Blade

Range of Adjustment : 4%, 6%, 8% & 10%
(Other Sizes Available Upon Request)

Overall Height: 3400mm

Mass (Complete): 675g (depending on options)

Minimum Chute Discharge Angle: 65°

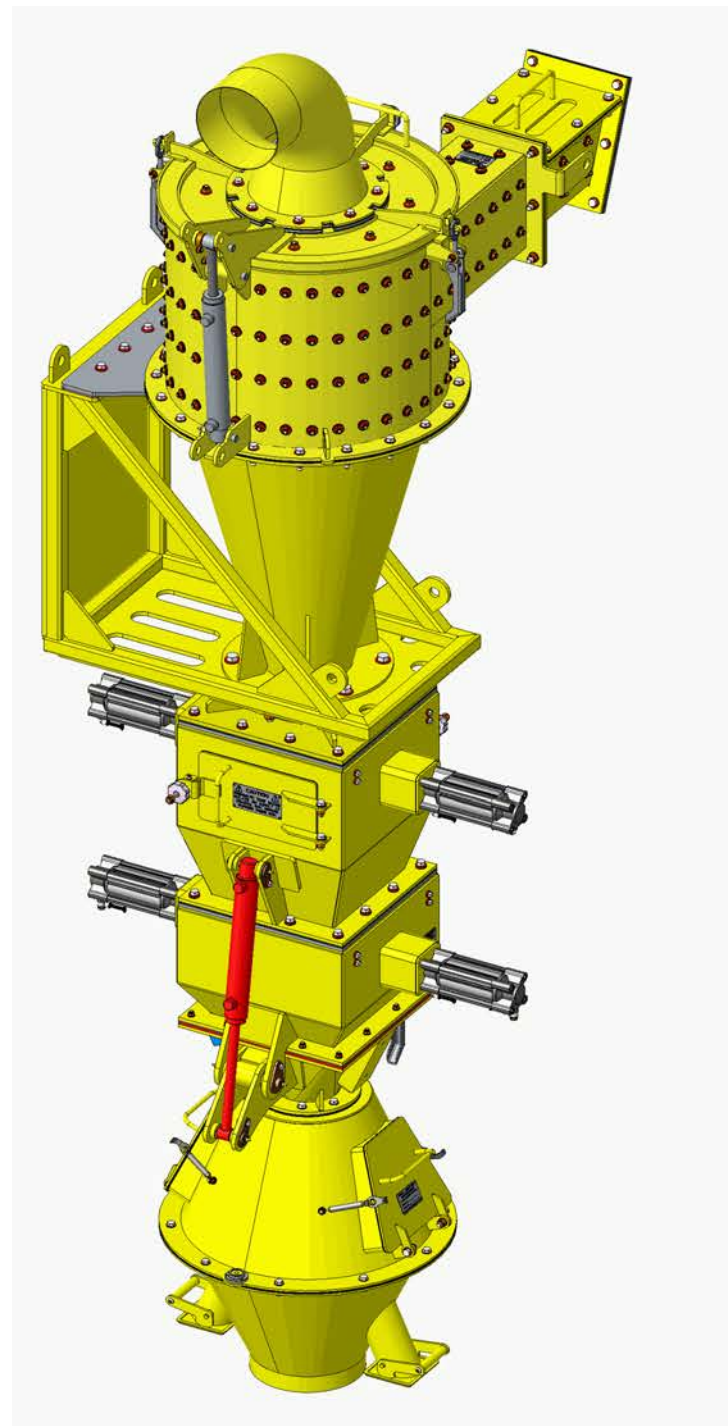
Sample Cone Base : 12"

Sample I Duplicate Chute : 4"

Waste Chute : 10"

Case Material: Mild Steel - Grade A53678-250
(Externally Painted)

Sample Cone Material: Stainless Steel - Grade 316



TS-02

COMPACT ROTARY SAMPLING SYSTEM

TS-02 Sampling System Specifications

Type: Rotary Sampling System (Compact)

Airflow Rating: <750 CFM

Sampling Conditions: Wet & Dry

No. of Sample Ports: 2 or 3

Sample Collection Type: Bag or Receptacle

Adjustment: Nominal 8% or Bolt on Blade (Optional)

Range of Adjustment : 4%, 6%, 8% & 10%

(Other Sizes Available Upon Request)

Overall Height: Approx. 2m

Mass (Complete): Approx. 260kg

Minimum Chute Discharge Angle: 60°

Sample Cone Base : 200mm

Sample I Duplicate Chute : 3" (all sample chutes)

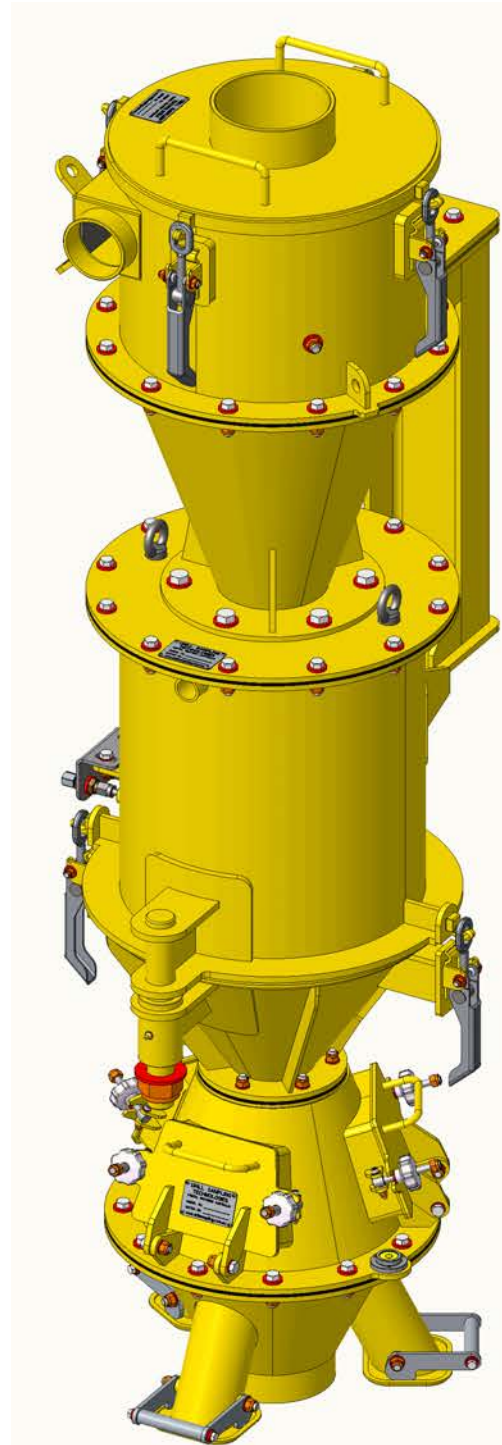
Waste Chute : 6"

Case Material: Mild Steel

(Externally Painted)

Sample Cone Material: Stainless Steel

Hydraulic Supply Requirements: 4.2 Litres / Min @ 180 Bar



TRUSPLIT

ROTARY SAMPLING SYSTEM

Trusplit Sampling System Specifications

Type: Static Cone Splitter with Rotary Sample
Distribution for Even Splitting
Airflow Rating: 450 - 1400 Liters per Second
(1000 - 3000 CFM)
Sampling Conditions: Wet & Dry
No. of Sample Ports: 2 or 3
Sample Collection Type: Sample Bag or Hose Discharge
Adjustment: Nominal 8% or Bolt on Blade (Optional)
Range of Adjustment : 4%, 6%, 8% & 10%
(Other Sizes Available Upon Request)
Overall Height: 3300mm
Mass (Complete) : 600kg (depending on options)
Minimum Chute Discharge Angle: 65°
Sample Cone Base : 350mm
Sample I Duplicate Chute : 5"
Waste Chute : 10"
Case Material: Mild Steel - Grade AS3678-250
(Externally Painted)
Sample Cone Material: Stainless Steel - Grade 316
Hydraulic Supply Requirements: 180 Bar (2500 psi) - Flow
Dependant on Sampling Interval & Equipment Options
Specified (Knife Gate, Vibrator Etc.)



Phone - 1300 790 925
Phone international - +61 89409 7744
Email - sales@corporaal.com.au



Corporaal Enterprises

Phone - 1300 790 925

Phone international - +61 89409 7744

Email - sales@corporaal.com.au

www.corporaal.com.au